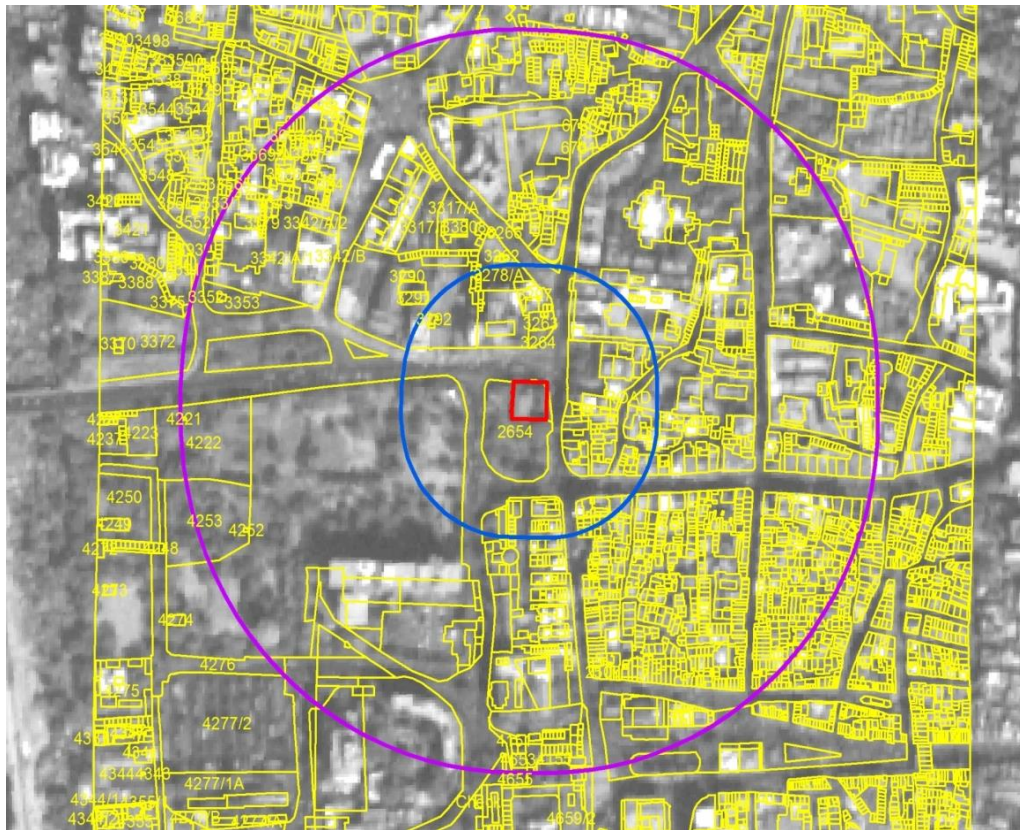


Satellite Maps showing Prohibited and Regulated areas around a few monuments

- Sidi Saiyed's Mosque – Ahmadabad

CARTOSAT IMAGE:



The screenshot shows the MapWindow GIS software interface. The main window displays the satellite map with yellow vector overlays. The interface includes a menu bar (Project, Layer, View, Bookmarks, Plug-ins, Administrative Boundary, Monument, Satellite Image, Help) and a toolbar with icons for navigation and analysis. A legend panel on the left lists layers and symbols:

- Layers:** 75, 50, 25_1, protected, 100, 300, Sidi Sai Yad's S Mosq.
- Legend:** 1, 0 - 127.5, 127.5 - 256, No Data, Prohibited Area(100), Regulated Area, Monuments, Protected Area.

The status bar at the bottom indicates the coordinate system: WGS 1984 Transverse Mercator, with coordinates X: 5 11 424.146 Y: 4 58 699.379 Meters, and scale 1:4188.